

B&C SIROCCO /WOMEN - JW 902

LIGHT WEIGHT JACKET / WITHOUT LINING



The Market Reference Windbreaker

- 100% nylon taffeta
- XS - S - M - L - XL - XXL
- 10 pcs/pack & 30 pcs/carton



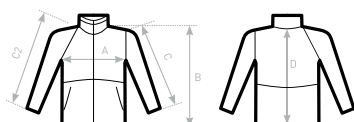
- Windproof
- Water-repellent
- Showerproof
- Feminine cut

- Full zip opening with zip pull
- Adjustable storm hood concealed inside the collar
- 2 front pockets
- Fold-away jacket (K-way® system) in pocket with double slider zip
- Adjustable bottom hem with drawcord



DUO
CONCEPT

with B&C Sirocco
EXISTS IN B&C SIROCCO /KIDS



C2+ RAGLAN SLEEVE

SIZES [CM]

B&C SIROCCO /WOMEN JW 902	XS	S	M	L	XL	XXL	XXXL
A HALF CHEST	50	52	54	56	58	60	-
B BODY LENGTH FROM NECK POINT	70	72	74	76	78	80	-
C SLEEVE LENGTH	61	63	65	67	69	71	-
D CENTER BACK LENGTH	69	71	73	75	77	79	-

B&C
COLLECTION
**OUTER
WEAR
/UNIT**